

Pear tree Hill Solar Farm

Environmental Statement

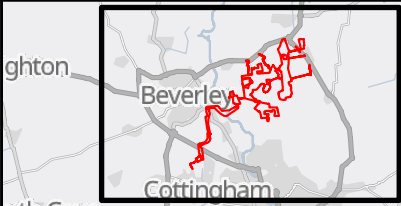
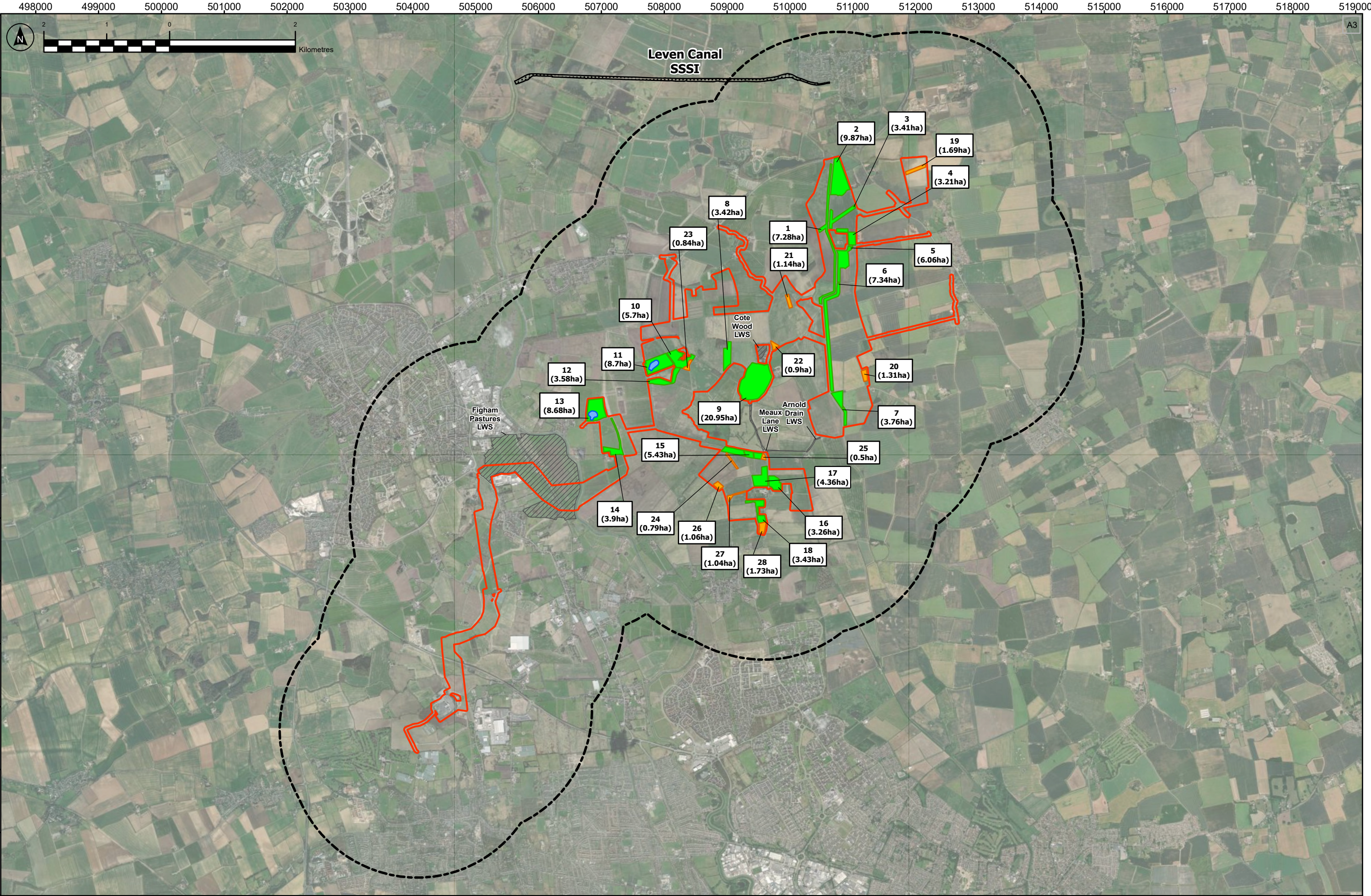
Volume 3

Figure 7.1: Designated Sites and Ecological Mitigation and Enhancement Areas

Revision 4

Application Document Ref: EN010157/APP/6.3
October 2025

Planning Act 2008
Infrastructure Planning
(Applications: Prescribed Forms
and Procedure) Regulations 2009 –
Regulation 5(2)(a)



Order Limits

2km buffer

Bird Scrapes

Mitigation and Enhancement Areas

Ecological Enhancement Areas (less than 2 hectares)

Ecological Mitigation Areas (greater than or equal to 2 hectares)

Site of Special Scientific Interest (SSSI)

Non-Statutory Sites (nearest to the Order Limits)

The Base mapping is based upon Ordnance Survey (OS) data. Reproduced by permission of Ordnance Survey on behalf of HMSO. © Crown copyright and database right 2024. All rights reserved. Ordnance Survey licence numbers 0100031673 and AC0000668432. Location of Non-Statutory sites provided by North & East Yorkshire Ecological Data Centre.

| | | | | | |
|-------|------------|-----|------|------|-------|
| Notes | | | | | |
| P11 | 30/10/2025 | RTJ | RPH | LW | BT |
| Rev | Date | By | Chkd | Appd | Authd |

Client

Designer

Project Name
Peartree Hill Solar Farm

Drawing Title

Environmental Statement
Volume 3, Figure 7.1:
Designated Sites and
Ecological Mitigation
and Enhancement
Areas

Scale at A3
1:55,000

Coordinate System:
British National Grid

Status
DCO Application

Rev
P04

PNIS Number
EN010157/APPI6.3

RWE Renewables UK Limited

Windmill Hill Business Park,
Whitehill Way,
Swindon,
Wiltshire,
England,
SN5 6PB
www.rwe.com

